

[ZOFC-B1]



Size (mm)	Weight (Kg)	No. of Cable Port
330 x 190 x 103	2.2	6 (Ø3 ~ Ø17)
No. of Splice Tray	Splice Capacity	IP
4	96 fs	68

[ZOFC-B2]

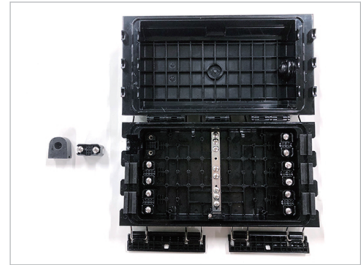


Size (mm)	Weight (kg)	No. of Cable Port
266 x 173.4 x 90.5	1.3	4 (Ø3 ~ Ø17)
No. of Splice Tray	Splice Capacity (Single / Double)	IP
2	24 fs / 48 fs	68

[Preparation]



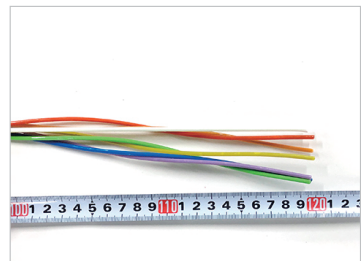
1. Prepare the closure. Remove Velcro strap and uninstall the splice trays. Remove gasket from the gasket track.



2. Separate cable grommets and cable retention clamps from the closure.

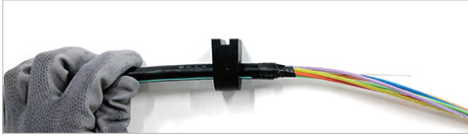
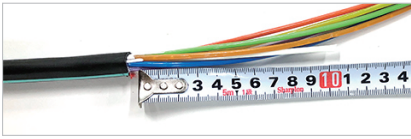


3. Pull the handle on the cable grommet and puncture the hole for the cable.

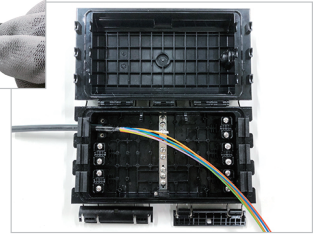
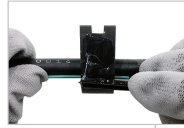


4. Prepare a cable. Measure 120cm and remove cable sheath.

[Cable Installation]



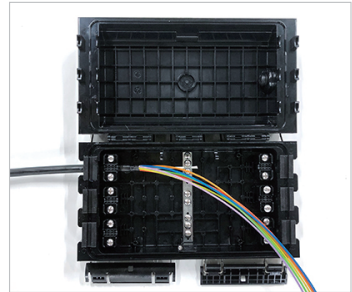
5. Cut the strength member, leaving 10cm. Insert the cable grommet to the cable. Wrap sealing tape around the end of cable sheath and protect the cable.



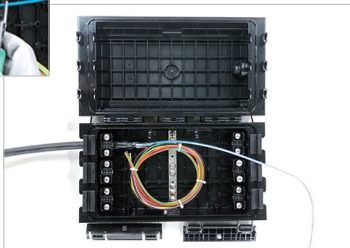
6. Apply grease on the grommet. Install the cable and the cable grommet to the cable port.



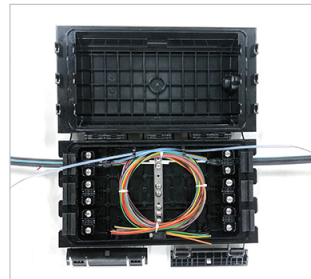
7. Place the strength member under the strength member retention plate. Fasten the strength member retention bolt and retain the strength member. Trim the strength member off.



8. Retain the cable with the cable clamp.  
**Attention!** Do not tighten the cable clamp too much as it causes optical loss.

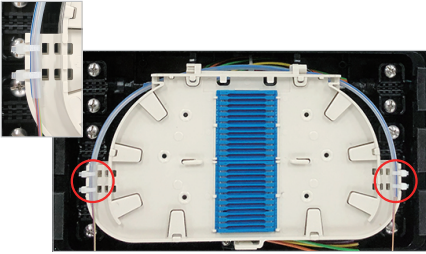


9. Separate the loose tube cable unit to splice and arrange the rest. Remove buffer tube of the loose tube cable unit to splice, leaving 10cm. Remove jelly on the fibers. Insert the protection tube to the fibers and protect the fibers.

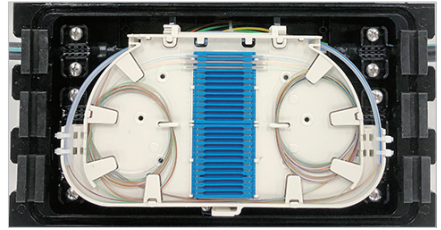


10. Follow the same process for the other side to install the cable.

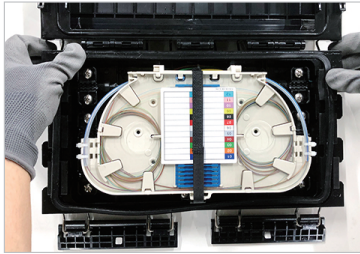
**[Splicing]**



11. Install the splice trays. Bring the fibers to the splice tray and retain them to the splice tray with cable ties.



12. Separate the fibers to splice and arrange the rest. Measure the fiber length and cut the fibers to splice. Splice the fibers in order and place the spliced fibers in the splice holder. Arrange the fibers on the tray.



13. Place the tray cover and protect the spliced fibers. Close the splice tray and retain the splice trays with the Velcro strap. Install the gasket on the gasket track. Close the closure.

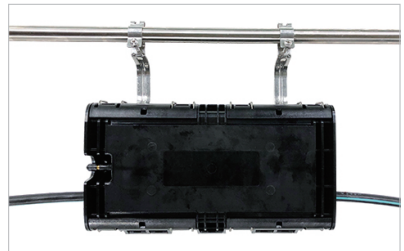
**[Aerial Mounting]**



14. Attach the mounting brackets to the closure.

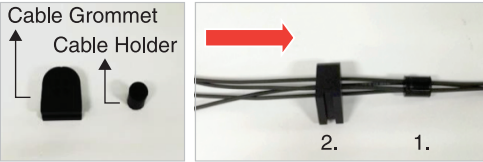


15. Confirm that the brackets are firmly attached.



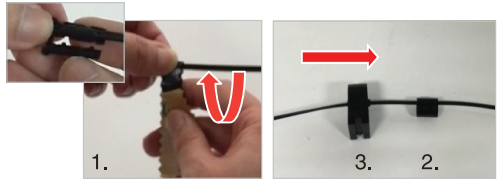
16. Attach the closure to the mounting rod. Complete the installation.

**[3mm Cable Application]**



1-A. Insert the cable holder to the cable (Ø3mm).  
 Insert the cable grommet to the cable.

**[3x2mm Cable Application]**



1-B. Wrap the supplied sealing tape over the flat cable (3x2mm). Insert the cable holder to the cable.  
 Insert the cable grommet to the cable.



2. Install the cable to the cable port. Place the cable holder under the cable clamp.

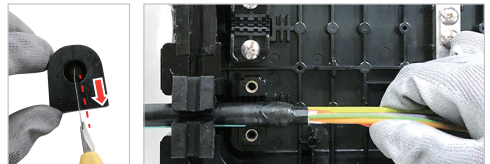


3. Retain the cable with the clamp.

**[Mid-Span Access Application]**



1. Mark two points 120cm apart from each other. Remove cable sheath between the two points.  
**Attention!** Please be attentive not to cut the loose tube cable units.



2. Pull the handle on the cable grommet and puncture the hole for the cable. Cut the cable grommet as above. Apply grease on the inside and the outside of the grommet. Insert the cable grommet to the cable and install the cable to the cable port.  
 Follow the same process for the other side to install the cable.